

UNITED WAY OF GREATER NEW HAVEN

Early Head Start Annual Report

2014-2015



United Way of Greater New Haven (UWGNH) manages an Early Head Start program that provides full-day, full-year child care and comprehensive support services for 36 infants and toddlers and their families. UWGNH works with two community-based organizations to implement the program: All Our Kin and LULAC Head Start Inc.

All Our Kin is a nationally-recognized, nonprofit organization that trains, supports, and sustains community child care providers in order to ensure that children and families have the foundation they need to succeed in school and in life.

All Our Kin provides Early Head Start services in up to eight contracted licensed Family Child Care Provider homes spread across New Haven.

LULAC Head Start Inc. is a non-profit organization that was established in September 1983. LULAC serves young children and their families in three centers, all of which are accredited by the National Association for the Education of Young Children (NAEYC). LULAC's mission statement is "Developing our Children and Families for Life."

LULAC provides Early Head Start services funded by United Way of Greater New Haven in two infant/toddler classrooms.

The Early Head Start program began serving children in May 2010.

Early Head Start by the Numbers:

Enrollment

Number of children funded: 36

All slots were filled to capacity throughout the program year

Number of children and their families served: 58

Participants by Age

	# of Participants	% of Participants
Less than 1 Year Old	9	15.5%
1 Year Old	23	39.6%
2 Years Old	26	44.8%
3 Years Old	0	0%

Percentage of Eligible Children Served: 1.2%

Average Monthly Attendance: 89.48%

Demographics

Ethnicity	# of Participants	% of Participants
Hispanic or Latino Origin	29	50%
Non-Hispanic or Non-Latino Origin	29	50%
Race	# of Participants	% of Participants
African American or Black	24	41.3%
White	8	13.7%
Biracial or Multi-Racial	23	39.6%
Other	1	1.7%
Unspecified	2	3.6%
Primary Language of Family at Home	# of Participants	% of Participants
English	36	62%
Spanish	21	36.2%
European/Slavic Languages	1	1.7%

Health Services

Percentage of Children with Health Insurance: 100

Percentage of Children have a medical home and received ongoing medical care: 100

Percentage of Children with a dental home: 100

Number of Children that received a dental exam as recommended by CT EPSDT (Early and Periodic Screening, Diagnostic, and Treatment) Schedule: 51

Disabilities Services

	# of Children	% of Children
Children with an Individualized Family Service Plan indicating they were determined eligible to receive early intervention services under IDEA, Part C	12	21% ¹

¹ 10 percent of the total number of children actually enrolled by each Head Start agency and each delegate agency will be children with disabilities who are determined to be eligible for special education and related services, or early intervention services, as appropriate, as determined under the Individuals with Disabilities Education Act (20 U.S.C. 1400 et seq.), by the State or local agency providing services under section 619 or part C of the Individuals with Disabilities Education Act (IDEA).

Family Services

	# of Families	% of Families
Total Number of Families	54	
Families Who Received at Least One Family Services	38	70.3%

Services included Emergency or Crisis Intervention, Housing Assistance, Mental Health Services, Substance Abuse Prevention and Treatment, Child Abuse and Neglect Services, Assistance to Families of incarcerated individuals, English as a Second Language Training, Adult Education and Job Training.

Parent and family engagement also took place throughout the program year through a variety of activities and events, at both the partner, delegate and grantee level.

All Our Kin and LULAC Head Start provided a variety of workshops and events in areas including health, nutrition and dental, and on various early childhood development topics.



School Readiness

The program promotes school readiness for infants, toddlers and their families. Both All Our Kin and LULAC Head Start created and are implementing school readiness goals for children. Information regarding preparing our youngest children for school is shared during parent orientations, home visits, family conferences and through daily conversations with parents by program staff and providers.

All children are assessed using Teaching Strategies Gold, a seamless assessment tool based on 38 research-based objectives that include predictors of school success.

Child Outcome data has been shared with Policy groups, Governing bodies, and community members.

The following graphs include Fall 2015 and Winter 2016 Assessment data for objectives that correlate to School Readiness goals within the five essential domains: Well-Being and Motor Development, Social and Emotional Development, Language and Literacy Development, Cognition and General Knowledge, and Approaches to Learning.

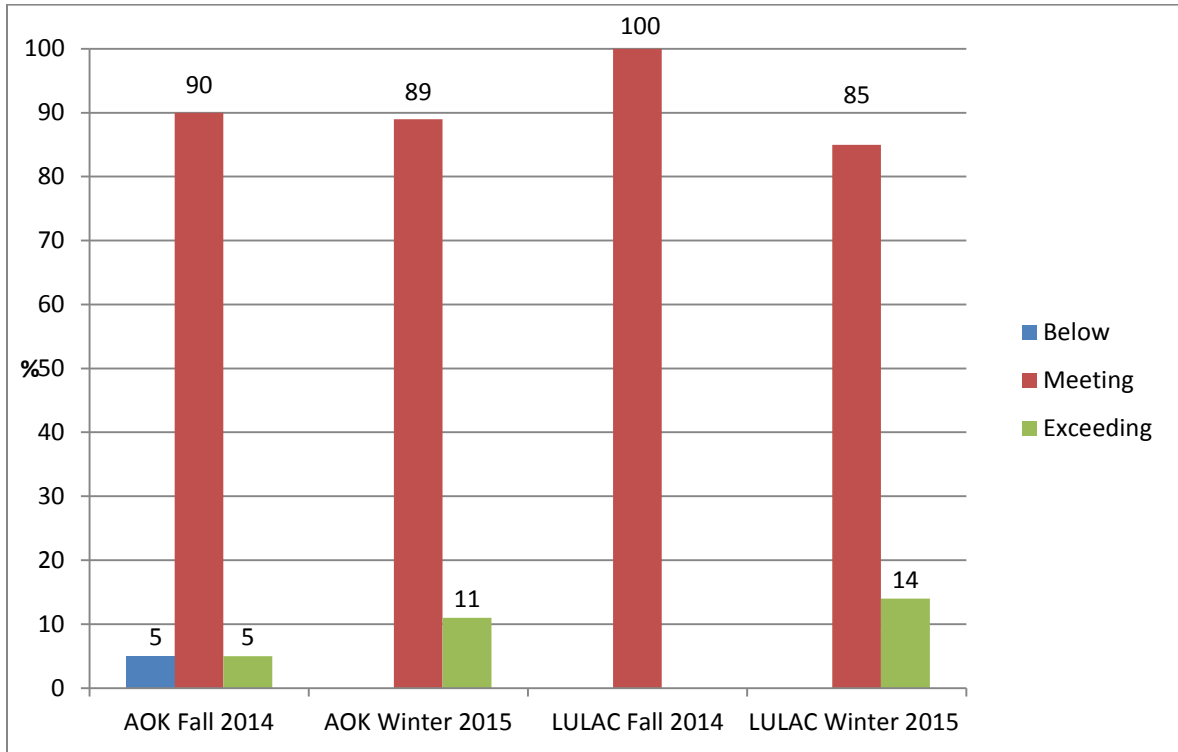
Enrollment Data

Since the completion of the Fall 2014 checkpoint, two new children were enrolled towards the end of the Winter Checkpoint and three children were terminated from the program.

Children with disabilities Data

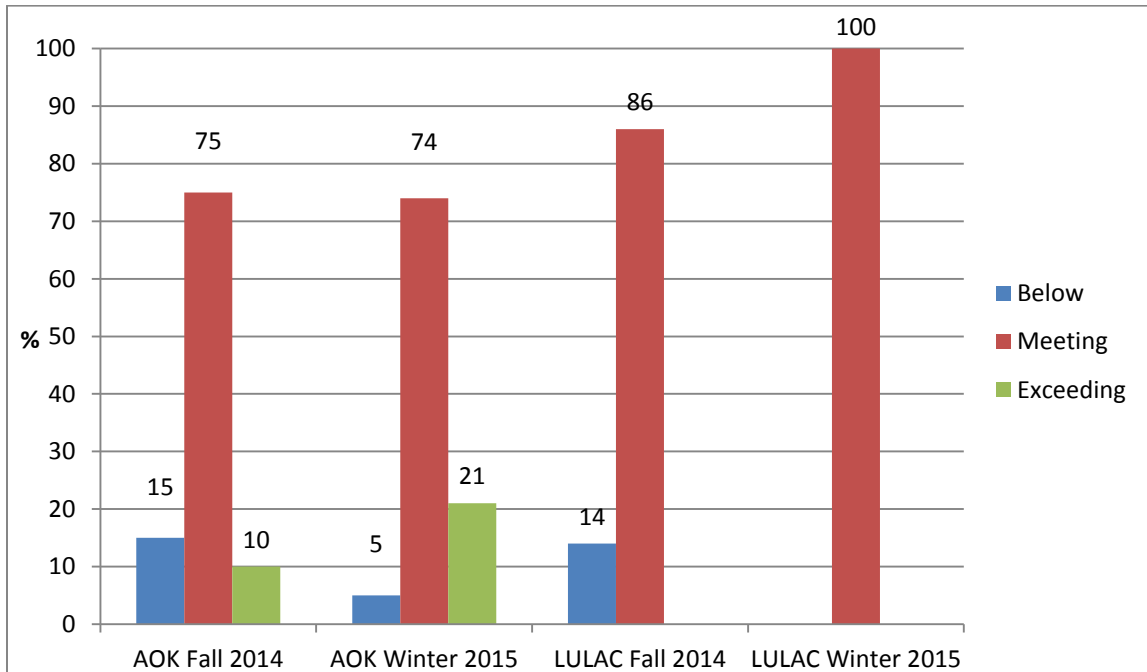
There were six children enrolled in the program with certified IFSPs (Individual Family Service Plans) during the Fall 2014 and Winter 2015 data collection periods.

Well-Being and Motor Development: Objective 7a: Uses fingers and hands



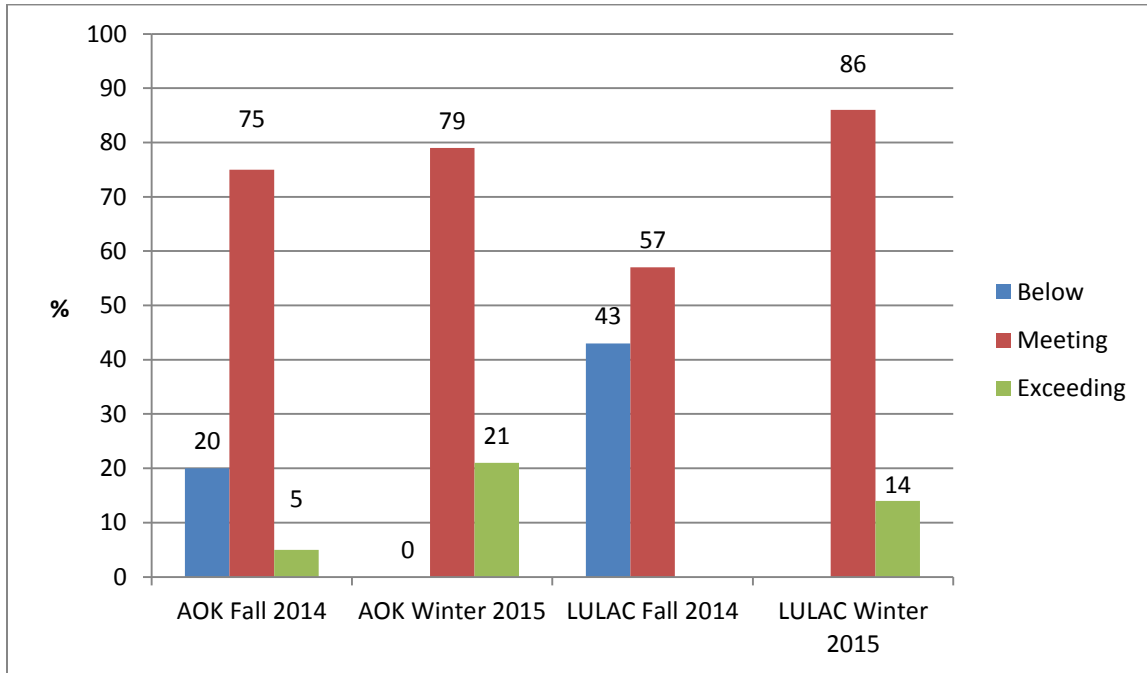
Social and Emotional Development:

Objective 2a: Establishes and sustains positive relationship; Forms relationships with adults



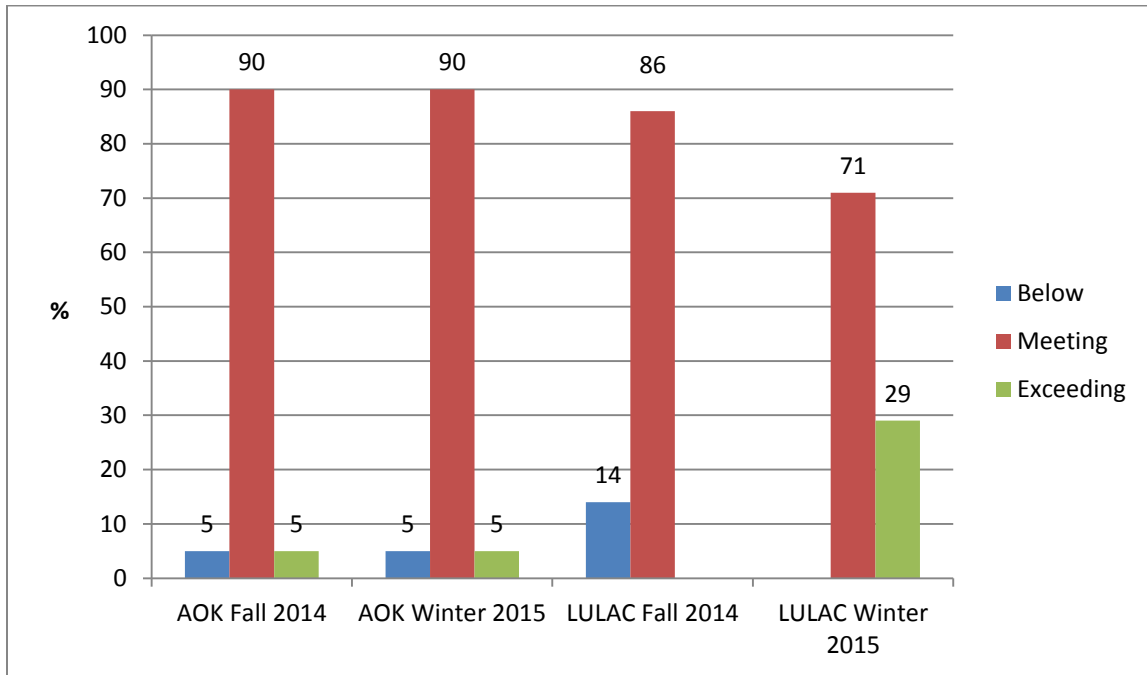
Language and Literacy Development:

Objective 10a: Uses appropriate conversational and other communication skills: Engages in conversations



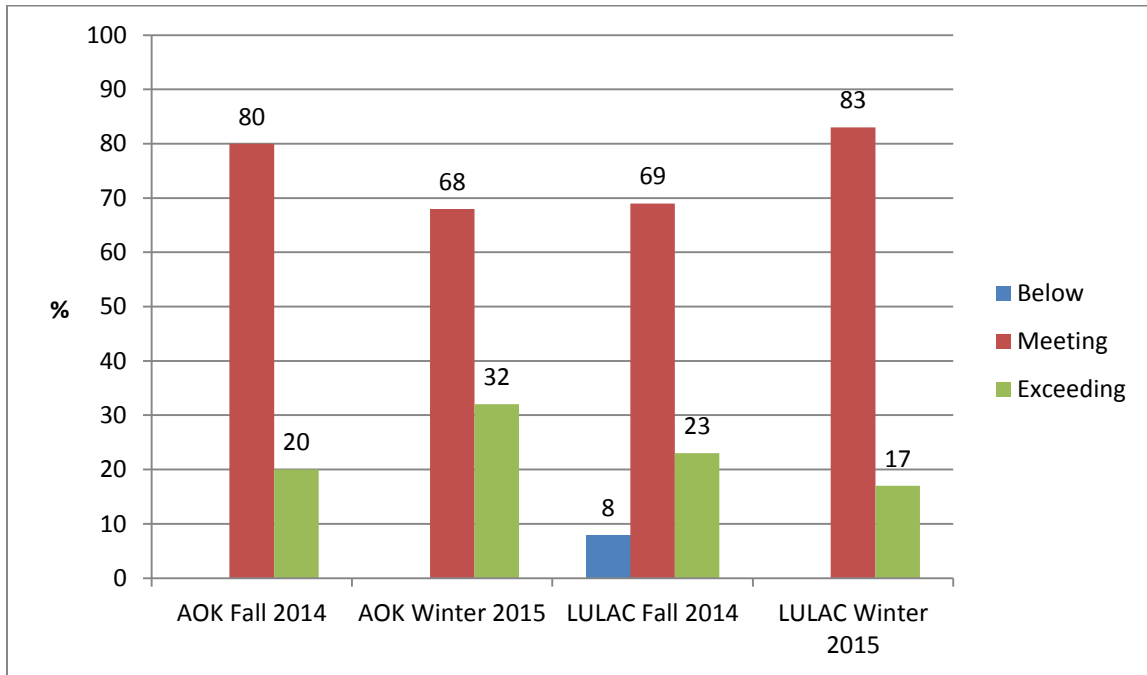
Cognition and General Knowledge:

Objective 11c: Demonstrates positive approaches to learning: Solves problems



Approaches to Learning:

Objective 11d: Demonstrates positive approaches to learning: Shows curiosity and motivation



Strengths:

In four of the five objectives displayed children showed growth from below to meeting and from meeting to exceeding the age-appropriate learning expectations.

Steps Taken:

All Our Kin providers made great strides in the quality of their observations and completed a three-part series on observation which was co-created with the Training and Technical Assistance Network and All Our Kin staff.

Education consultants continue to tailor visits and provide resources to meet the needs of providers and areas for growth in children. Additionally, All Our Kin applied for funding to purchase tablets for providers in order to move towards providers entering observations directly into the online assessment system. Currently providers record observations by hand and they are entered into paper portfolios.

LULAC Head Start continues to use the coaching model to assist and support teaching staff in the classroom and continues to offer curriculum support training for staff on topics related to School Readiness. Specialized trainings for Infant and Toddler were offered at LULAC's annual pre-service training in August 2015.

Both All Our Kin and LULAC Head Start review individual child data with families at Family conferences.

Funding Source:

Federal Grant \$571,873 Federal*/\$142,968.25 Match

Early Head Start Budgets:

United Way of Greater New Haven	Proposed	Actual as of July 31, 2015**
Personnel	\$73,790 Match \$3,900	\$35,947.45 Match \$0
Fringe Benefit	\$10,474	\$6,033.28
Travel	\$0	\$0
Equipment	\$0	\$0
Supplies	\$3,000 Match \$11,000	\$299.36 Match \$0
Contractual	\$3,000	\$0
Other	\$1,025	\$2,626.41
Training/Training Assistance	\$1,500	\$442.28
All Our Kin	Proposed	Actual as of July 31, 2015
Personnel	\$90,225 Match \$37,175	\$50,531.09 Match \$11,608.01
Fringe Benefits	\$25,263 Match \$10,409	\$290.78 Match \$734.94
Travel	\$0	\$364.05
Equipment	\$0	\$0
Supplies	\$19,772 Match \$4,400	\$2,837.41 Match \$0
Contractual	\$95,420 Match \$15,500	\$110,117.76 Match \$988.13
Other	\$800	\$0
Training/Technical Assistance	\$7,553	\$4,756.12
LULAC Head Start Inc.	Proposed	Actual as of July 31, 2015
Personnel	\$177,132	\$91,897.30 Match \$10,046.54
Fringe Benefits	\$49,388 Match \$3,189	\$23,433.49 Match \$3,491.12
Travel	\$0	\$0
Equipment	\$0	\$0
Supplies	\$5,333 Match \$3,825	\$5,824.73 Match \$0
Contractual	\$7,338 Match \$3,140	\$2,690.28 Match \$0
Other	\$2,925 Match \$41,027	\$12,897.94 Match \$19,509.43
Training/Technical Assistance	\$4,720	\$989.27

* Program year runs from August 1-July 31 while grant fiscal year runs from January 1-December 31

Financial Accountability

United Way of Greater New Haven is audited annually by an independent auditor. United Way of Greater New Haven is pleased to report that the organization has had no findings in our most recent audit.

To see United Way of Greater New Haven's full 2015 Audit Report please follow this link

<http://www.uwgnh.org/about-us/financials>

The Office of Head Start conducted a follow-up monitoring review on October 27th and October 30th 2014. To see the full Office of Head Start monitoring report please follow this link

<http://eclkc.ohs.acf.hhs.gov/hslc/data/psr> and enter United Way of Greater New Haven in the box **Enter Grantee Name** under **Find a Program**